

Profile on Injury Data for Rodney

This factsheet presents all age data on injury deaths and injury hospitalisations by numbers, rates, the three leading causes, gender and ethnicity. The data for injury deaths were sourced via the Injury Prevention Research Unit (IPRU) from the New Zealand Health Information Service (NZHIS) for the years 2000-2001 (the most recent years for which injury death data were available). The data for injury hospitalisations were sourced via the IPRU from the NZHIS for the years 2000-2003 (the most recent years for which injury hospitalisation data were available). Separate analysis from these data sets for the 0-19 year age group were also conducted.

INJURY DEATHS:

- ⇒ During the two-year period 2000-2001, 63 people from Rodney died as a result of an injury, an annual average of 32;
- ⇒ Motor vehicle traffic crashes were the leading cause of injury death, followed by suicide & falls; and
- ⇒ Males accounted for the majority (two-thirds) of the injury deaths.

Fatalities due to injury for Rodney, including number, rates & leading causes, 2000-2001

Number of Injury Deaths	Rate per 100,000 People	Leading Cause of Injury Death	Second Cause of Injury Death	Third Cause of Injury Death
63	40.7	Motor Vehicle Traffic: (n=22) 35%	Suicide: (n=16) 25%	Falls: (n=8) 13%

Fatalities due to injury for Rodney by ethnicity, 2000-2001

European		Maori		Pacific		Asian		Other	
(n)	%	(n)	%	(n)	%	(n)	%	(n)	%
58	92	3	5	1	2	1	2	0	0

Fatalities due to injury for Rodney by gender, number & rates, 2000-2001

Female		Male	
Number	Rate per 100,000 People	Number	Rate per 100,000 People
23	29.1	40	52.9



INJURY HOSPITALISATIONS:

- ⇒ During the four-year period 2000-2003, 3273 people from Rodney were hospitalised overnight for treatment of an injury, an annual average of 818;
- ⇒ Falls were the leading cause of injury hospitalisations; and
- ⇒ Males had a higher number and rate of hospitalisations for injuries than females.

Hospitalisations due to injury for Rodney, including number, rates & leading causes, 2000-2003

Number of Injury Hospitalisations	Rate per 100,000 People	Leading Cause of Injury Hospitalisations	Second Cause of Injury Hospitalisations	Third Cause of Injury Hospitalisations
3273	1057.4	Falls: 40%	Motor Vehicle Traffic: 10%	Cut/Pierce: 8%

Hospitalisations due to injury for Rodney by ethnicity, 2000-2003

European		Maori		Pacific		Asian		Other	
(n)	%	(n)	%	(n)	%	(n)	%	(n)	%
2599	79	285	9	29	1	48	1	312	10

Hospitalisations due to injury for Rodney by gender, number & rates, 2000-2003

Female		Male	
Number	Rate per 100,000 People	Number	Rate per 100,000 People
1360	858.9	1913	1265.2



INJURY DEATHS (0-19 years):

Safe Communities Foundation New Zealand (SCFNZ)

Hurstmere House, Suite 5A, 128 Hurstmere Road, Takapuna, PO Box 331399, Takapuna, North Shore 0740, New Zealand.

Tel: +64 9 488 7601 Fax: +64 9 488 7602 Email: contact@scfnz.org Web: www.safecommunities.org.nz

SCFNZ is a: Certifying Centre and

Affiliate Safe Community Support Centre of the WHO Collaborating Centre on Community Safety Promotion;

Accrediting Centre for Safe School Community International Designation Programme.

- ⇒ During the two-year period 2000-2001, 5 young people from Rodney died as a result of an injury;
- ⇒ Motor vehicle traffic crashes were the leading cause of injury death; and
- ⇒ Maori and males accounted for the majority of the injury deaths during this period.

Fatalities due to injury for young people in Rodney, including number, rates & leading causes, 2000-2001

Number of Injury Deaths	Rate per 100,000 People	Leading Cause of Injury Death	Second Cause of Injury Death
5	11.1	Motor Vehicle Traffic: 80%	Drowning: 20%

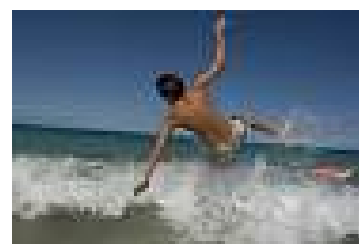


Fatalities due to injury for young people in Rodney by ethnicity, 2000-2001

European		Maori		Pacific		Asian		Other	
(n)	%	(n)	%	(n)	%	(n)	%	(n)	%
0	0	3	60	1	20	1	20	0	0

Fatalities due to injury for young people in Rodney by gender, number & rates, 2000-2001

Female		Male	
Number	Rate per 100,000 People	Number	Rate per 100,000 People
1	4.5	4	17.5



INJURY HOSPITALISATIONS (0-19 years):

- ⇒ During the four-year period 2000-2003, 1039 young people from Rodney were hospitalised overnight for treatment of an injury, an annual average of 260;
- ⇒ Falls were the leading cause of injury hospitalisations; and
- ⇒ Young males accounted for the majority of injury hospitalisations during this period.

Hospitalisations due to injury for young people in Rodney, including number, rates & leading causes, 2000-2003

Number of Injury Hospitalisations	Rate per 100,000 People	Leading Cause of Injury Hospitalisations	Second Cause of Injury Hospitalisations	Third Cause of Injury Hospitalisations
1039	1153.4	Falls: 45%	Motor Vehicle Traffic: 9%	Cut/Pierce: 8%

Hospitalisations due to injury for young people in Rodney by ethnicity, 2000-2003

European		Maori		Pacific		Asian		Other	
(n)	%	(n)	%	(n)	%	(n)	%	(n)	%
804	77	136	13	12	1	21	2	66	6



Hospitalisations due to injury for young people in Rodney by gender, number & rates, 2000-2003

Female		Male	
Number	Rate per 100,000 People	Number	Rate per 100,000 People
369	832.7	670	1463.9



This factsheet was funded with support from the Accident Compensation Corporation, Wellington NZ

Safe Communities Foundation New Zealand (SCFNZ)

Hurstmere House, Suite 5A, 128 Hurstmere Road, Takapuna, PO Box 331399, Takapuna, North Shore 0740, New Zealand.

Tel: +64 9 488 7601 Fax: +64 9 488 7602 Email: contact@scfnz.org Web: www.safecommunities.org.nz

SCFNZ is a: Certifying Centre and

Affiliate Safe Community Support Centre of the WHO Collaborating Centre on Community Safety Promotion;

Accrediting Centre for Safe School Community International Designation Programme.

Factsheet Updated May, 2008